

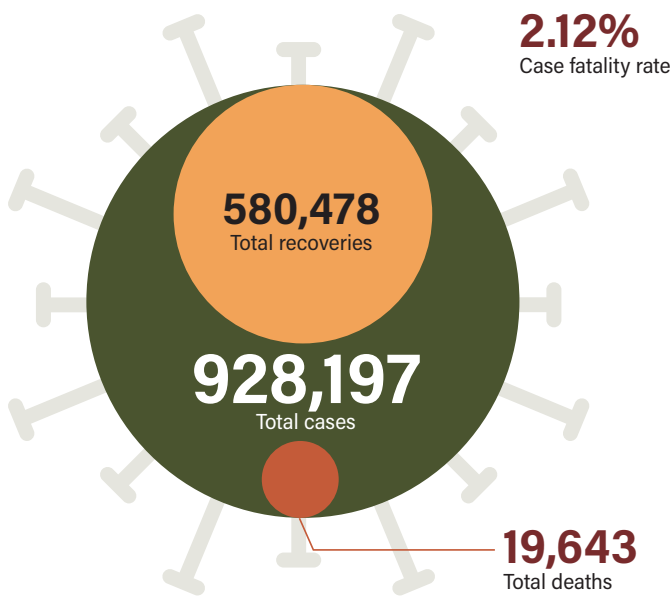
Africa Centres for Disease Control and Prevention (Africa CDC)

COVID-19 RESPONSE UPDATE

31 July 2020



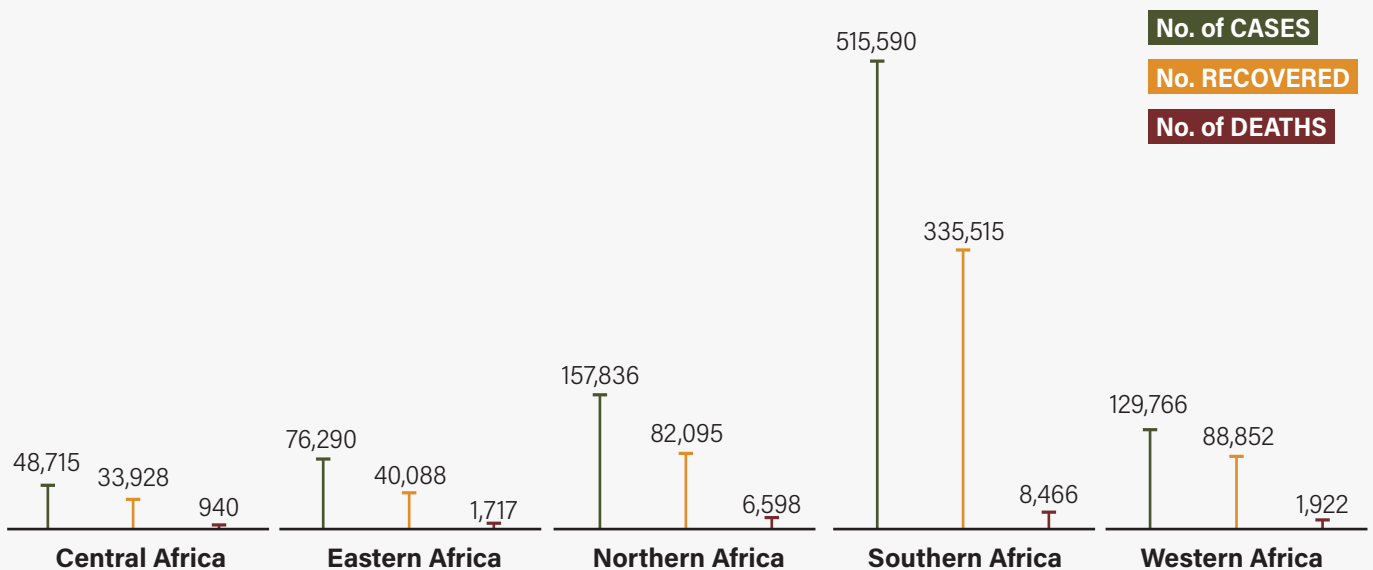
EPIDEMIOLOGIC UPDATE



Case fatality rate by region

Northern Africa	4.18%
Eastern Africa	2.25%
Central Africa	1.93%
Southern Africa	1.64%
Western Africa	1.48%

Epidemiologic figures by region



EQUIPMENT SUPPORT TO MEMBER STATES

10,067,900
face masks

2,741,386
laboratory tests

1,506,550
gloves

485,945
protective suits

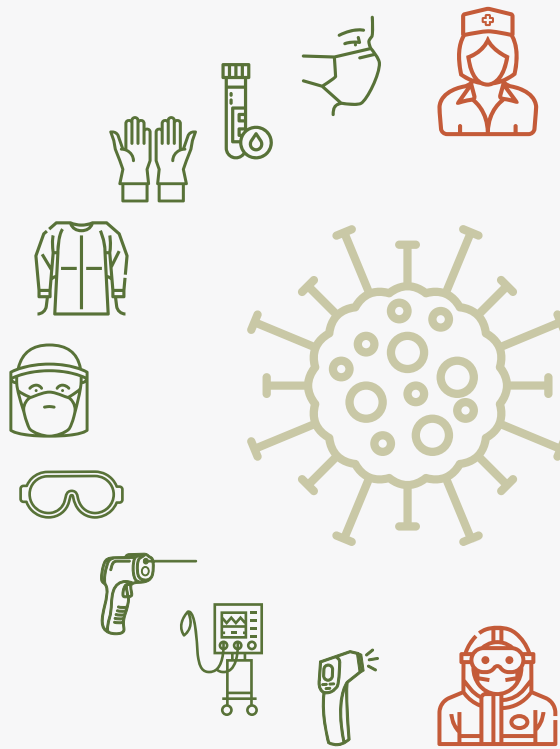
438,101
face shields

9,408
goggles

4,055
infrared thermometers

726
ventilators

108
thermal scanners



NUMBER OF HEALTHCARE WORKERS TRAINED

7,930
Case management

6,249
Infection prevention and control

3,878
Surveillance

2,139
Laboratory diagnostics

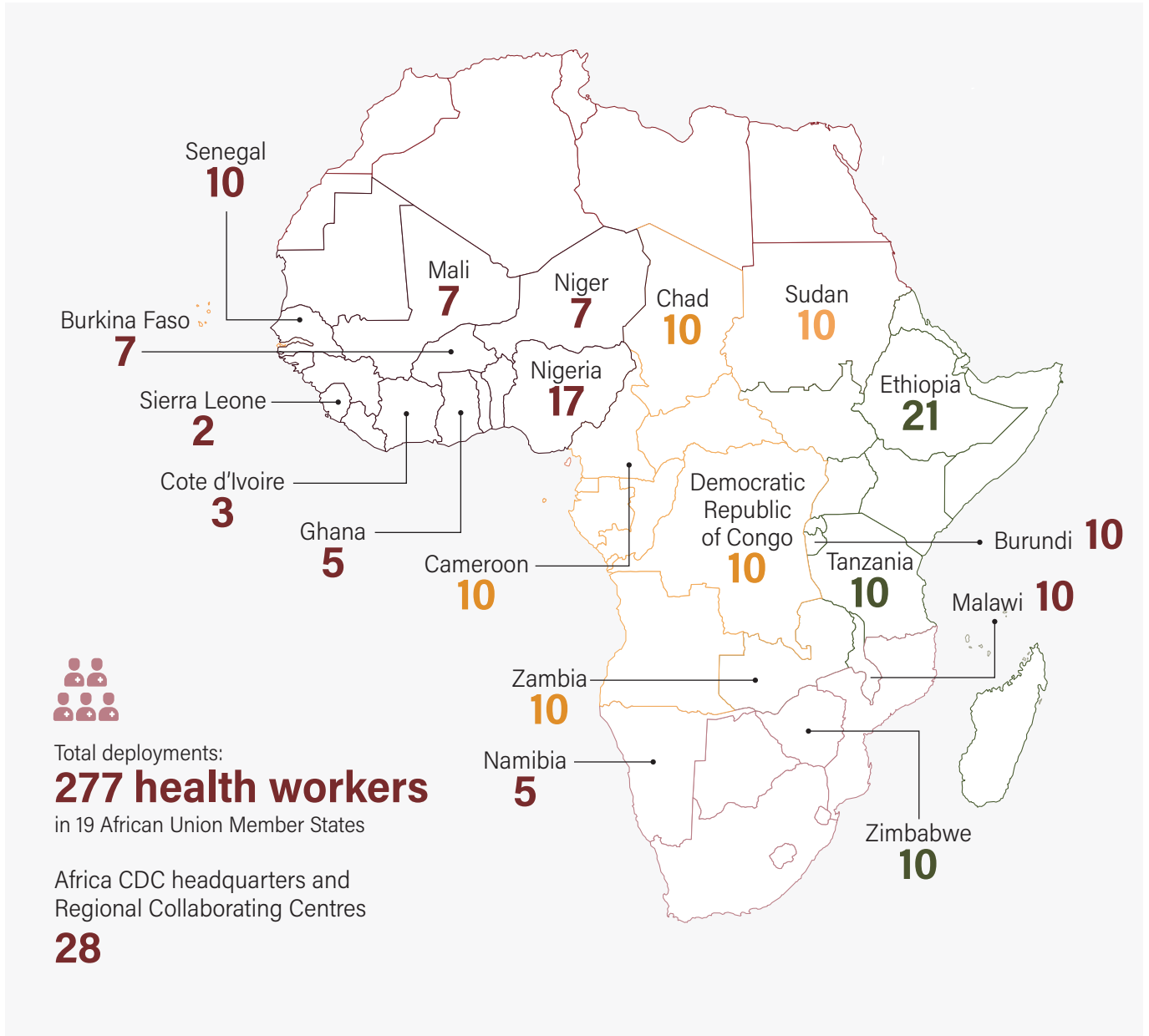
510
Risk communication and community engagement

STRATEGIC ACTION UPDATE





PERSONNEL DEPLOYMENTS BY COUNTRY



AFRICA CDC TARGETS



Conduct 10 million COVID-19 tests in Africa by the end of October 2020



Deploy one million community workers and community health care workers in Africa by the end of 2020



Train 100,000 health care workers to support COVID-19 response in Africa by the end of 2020



Maintain a continent-wide pooled procurement, storage and distribution platform for laboratory diagnostics and medical supplies



COVID-19 tests conducted by Member States as of 31 July 2020

Country	Estimated population	Reported COVID-19 cases	No. of tests conducted	No. of tests per million population
Total	1,339,423,943	928,197	8,677,567	6,771
South Africa	59,308,690	493,183	3,001,985	52,491
Kenya	53,771,296	20,636	1,273,939	6,121
Morocco	36,910,560	23,259	463,675	36,888
Uganda	45,741,007	1,154	429,712	6,226
Ethiopia	114,963,588	17,530	396,731	3,999
Nigeria	206,139,589	43,151	310,330	1,476
Egypt*	102,334,404	93,757	283,916	4,547
Sierra Leone	7,976,983	1,823	278,262	2,277
Sudan*	43,849,260	11,738	269,261	766
Tanzania*	59,734,218	509*	205,285	65
Côte d'Ivoire	26,378,274	16,047	116,420	3,928
Ghana	31,072,940	37,812	111,020	13,060
Mauritius	1,271,768	344	101,583	161,417
Mali	20,250,833	2,535	96,198	1,242
Botswana	2,351,627	804	85,001	29,096
Zambia	18,383,955	5,963	79,255	4,873
Niger	24,206,644	1,136	68,423	454
Burkina Faso	20,903,273	1,143	64,109	973
Guinea	13,132,795	7,183	62,792	4,692
Zimbabwe	14,862,924	3,169	62,084	4,533
Cape Verde	555,987	2,451	61,577	111,166
Rwanda	12,952,218	2,022	59,802	21,854
Namibia	2,540,905	2,129	58,991	11,720
Angola	32,866,272	1,148	58,018	1,988
Gabon	2,225,734	7,352	57,929	38,355
Eswatini	1,160,164	2,648	49,692	23,320
Democratic Republic of Congo	89,561,403	9,084	47,082	533
Tunisia	11,818,619	1,514	46,448	8,362
Libya	6,871,292	3,222	44,356	9,481
South Sudan	11,193,725	2,418	42,926	1,237
Senegal	16,743,927	10,106	42,344	7,203
Algeria*	43,851,044	29,831	33,527	2,676
Mozambique	31,255,435	1,864	30,930	2,039
Mauritania	4,649,658	6,249	29,533	13,737
Equatorial Guinea	1,402,985	4,821	26,344	31,615
Benin	12,123,200	1,770	25,667	4,735
Madagascar	27,691,018	10,868	22,693	1,648
Djibouti	988,000	5,126	19,073	60,637
Republic of The Congo*	5,518,087	3,387	18,851	3,062
Central Africa Republic	4,829,767	4,614	17,036	6,122
Chad	16,425,864	936	15,614	392
Cameroon*	26,545,863	17,255	15,474	2,305
Togo	8,278,724	941	13,715	5,380
Somalia*	15,893,222	3,212	11,897	1,202
Malawi	19,129,952	4,078	11,090	1,708
Burundi*	11,890,784	395	10,956	1,313
Seychelles	98,347	114	9678	33,494
Eritrea*	3,546,421	279	8,606	2,731
Liberia*	5,057,681	1,189	6,323	2,392
Lesotho	2,142,249	604	6,181	4,045
Guinea-Bissau*	1,968,001	1,981	5,968	5,713
Gambia	2,416,668	498	3,880	3,001
Comoros*	869,601	340	3294	2,180
Sao Tome and Principe	219,159	871	1846	27,231
Sahrawi Arab Republic*	597,339	4	245	412

*Some missing data